

HUB-QD ADAPTER INSTALLATION INSTRUCTIONS

WARNING

Use proper safety equipment before handling. Ensure firearm is not loaded before installing or removing the adapter. Only operate the adapter with a serviceable firearm and ammunition of the correct caliber. Do not disassemble the adapter beyond required level, as shown in this manual, for standard maintenance.

The adapter can reach extremely hot temperatures. Use caution before handling after use. Avoid contact with skin or clothing when hot. Improper installation or use may result in serious injury or death.

Discharging firearms in poorly ventilated areas, cleaning firearms or handling ammunition may result in exposure to lead and other substances, which can cause birth defects, reproductive harm and other serious physical injury. Ensure adequate ventilation at all times. Wash hands thoroughly after exposure.

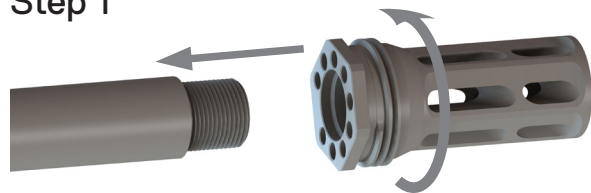
LEGAL WARNING

This product is manufactured in the USA by HUXWRX Safety Co for sale within the USA only. Export of this commodity is strictly prohibited without a valid export authorization from the U.S. Department of State - DDTC and/or the U.S. Department of Commerce - BIS as prescribed in ITAR 22 CFR Part 120-130 and/or EAR 15 CFR Part 774.

It is your responsibility to check your local state and federal laws for ownership, hunting, transferring and transporting laws regarding silencers.

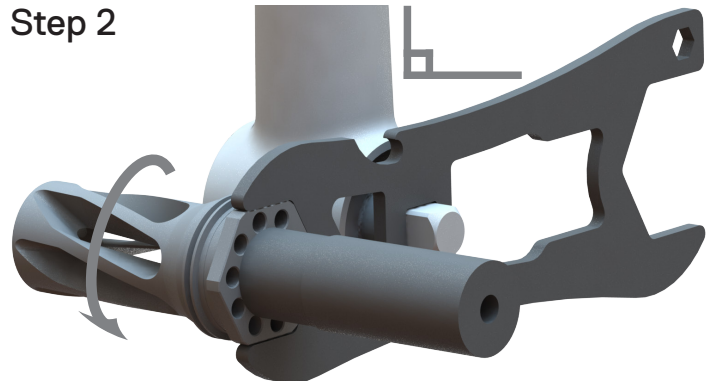
MOUNT INSTALL

Step 1



HUB-QD Adapters require a HUXWRX QD muzzle device. Ensure all mounting surfaces are clean before installation.

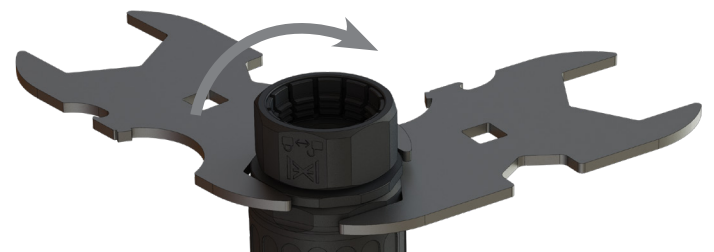
Step 2



Thread the QD muzzle device directly onto the barrel of the host firearm. Using a HUXWRX QD wrench with torque wrench, index the hex flats on the muzzle device and torque it to approximately 33ft-lbf (45 Nm).

Ensure the QD wrench is oriented 90° to the torque wrench.

ADAPTER INSTALL



Affix a VENTUM wrench horizontally in a vice and index it onto the wrench flats at the base of the housing. Use an additional VENTUM wrench, as shown, or 1 5/8" socket on the HUB-QD Adapter flats and torque to 25 ft-lbf (34 Nm).



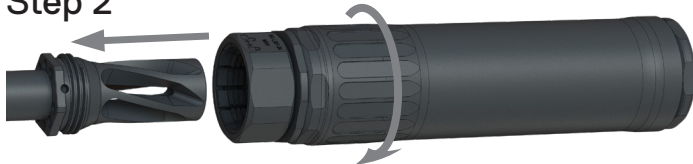
SUPPRESSOR INSTALL

Step 1



Ensure all threads and taper mounting surfaces are clean. By hand, loosen the lock nut at the base of the adapter.

Step 2



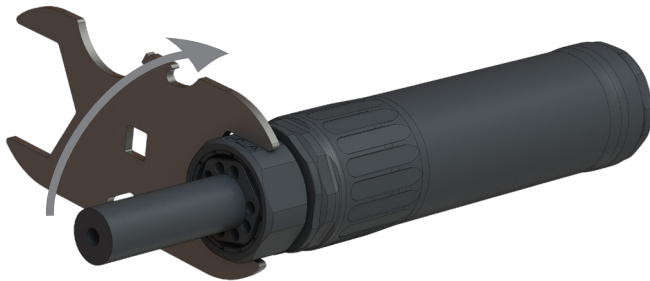
Thread the suppressor counter-clockwise onto the QD muzzle device until hand-tight. Reference the lock/unlock icon on the adapter to verify rotation direction. It should be firmly seated.

Step 3



Tighten the lock nut firmly by hand. Reference the lock/unlock icon on the lock nut to verify rotation direction.

Step 4



If hand removal is not desired, use a wrench to tighten the lock nut until it bottoms out onto the suppressor. Install is complete.

SUPPRESSOR REMOVAL

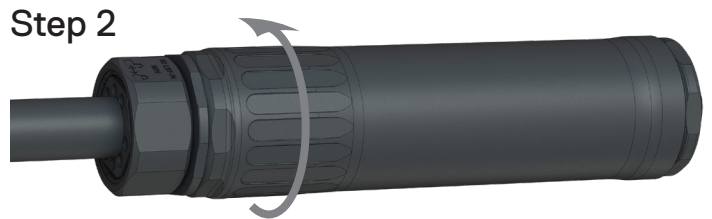
Step 1



Loosen the lock nut by hand, use a wrench if necessary.

WARNING: Suppressor and adapter may be hot.

Step 2



By hand, rotate the suppressor clockwise. A wrench can also be used to remove the suppressor.

WARRANTY

There is a limited lifetime warranty against all manufacturing defects and damages caused by the normal use of this product. The manufacturer will repair or replace free of charge any suppressor manufactured by or, at the direction of, HUXWRX Safety CO. LLC.

The product is sold "as is" with no further implied contractual rights or warranties beyond those expressly stated herein.

Visit www.huxwrx.com for more warranty information.