

# VENTUM INSTRUCTION MANUAL

## WARNING

Use proper safety equipment before handling. Ensure firearm is not loaded before installing or removing the suppressor. Only operate the suppressor system with a serviceable firearm and ammunition of the correct caliber. Do not disassemble the suppressor system beyond required level, as shown in this manual, for standard maintenance.

The suppressor system can reach extremely hot temperatures. Use caution before handling after use. Avoid contact with skin or clothing when hot. Improper installation or use may result in serious injury or death.

Discharging firearms in poorly ventilated areas, cleaning firearms or handling ammunition may result in exposure to lead and other substances, which can cause birth defects, reproductive harm and other serious physical injury. Ensure adequate ventilation at all times. Wash hands thoroughly after exposure.

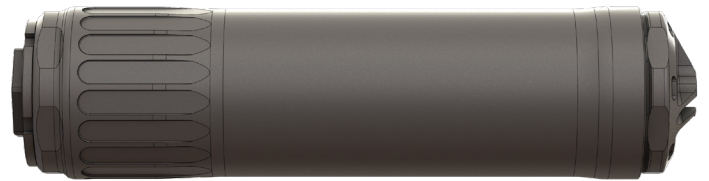
## LEGAL WARNING

Suppressors (often referred to as silencers, cans, or mufflers) are controlled under both the National Firearms Act (NFA) (26 U.S.C. §5849 et seq.) and the Gun Control Act (18 U.S.C. §921 et seq.).

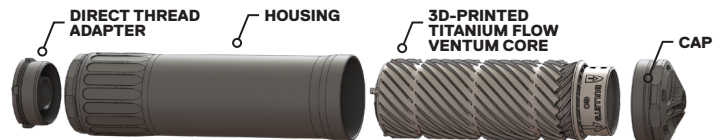
Storing an unlocked sound suppressor at home with a person who is not registered to possess the device may be construed as "constructive possession" by the ATF, which may be punishable by law.

This product is manufactured in the USA by HUXWRX Safety Co for sale within the USA only. Export of this commodity is strictly prohibited without a valid export authorization from the U.S. Department of State - DDTC and/or the U.S. Department of Commerce - BIS as prescribed in ITAR 22 CFR Part 120-130 and/or EAR 15 CFR Part 774.

It is your responsibility to check your local state and federal laws for ownership, hunting, transferring and transporting laws regarding silencers.



The VENTUM comes with a Direct Thread Adapter and Vented Cap torqued to 25 ft-lbf, ready to be assembled onto a barrel. Always ensure the Vented Cap and HUB Adapter of choice are torqued to the Housing at 25 ft-lbf and any HUB compatible mounting system is properly torqued to the barrel before firing.



### To assemble the VENTUM:

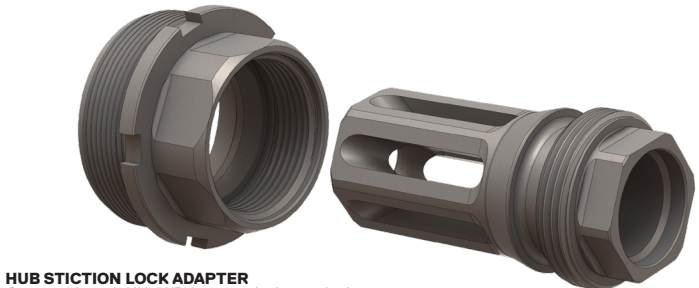
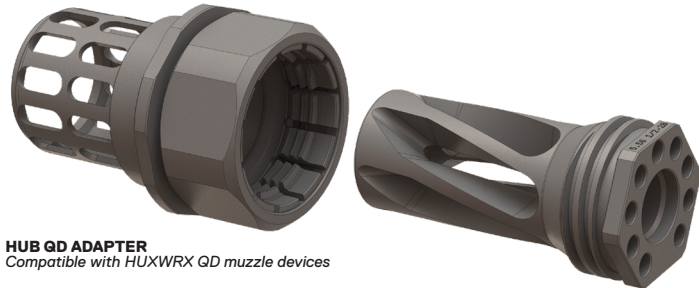
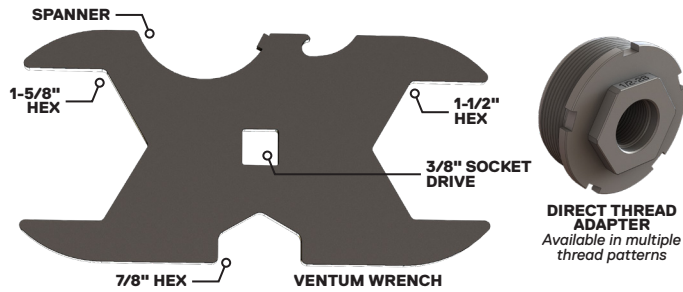
1. Ensure components are assembled as shown above.
2. Use provided VENTUM Wrench and torque wrench on the Cap and 7/8" socket on the Direct Thread Adapter to torque the components to 25 ft-lbf.
3. A 1-5/8" 6-point socket can also be used on the Cap in a case where the VENTUM Wrench is being used on the Housing flats.
4. The VENTUM Wrench can be secured into a vice to aid in this process.
5. Additional VENTUM Wrenches are available at [HUXWRX.COM](http://HUXWRX.COM).

## CORE INSTALLATION



- It is critical that the FLOW VENTUM Core is assembled in the orientation shown.
- Note that when properly assembled, the FLOW VENTUM Core will protrude from the end of the suppressor with arrows pointing away from the shooter.
- A 1" wooden dowel can be used to push out the FLOW VENTUM Core.

# VENTUM ACCESSORIES



## HUB COMPATABILITY

### List of approved HUB Mounts for the VENTUM:

- HUXWRX HUB-QD
- Q Plan-B
- SilencerCo ASR Bravo
- Rugged Universal Mount (RUM)
- Dead Air Xeno
- Dead Air Keymo

## HUB ACCESSORY INSTALLATION



1. To remove the Direct Thread Adapter, use the VENTUM Wrench on the 1-5/8" Housing flats and a 7/8" socket on the Direct Thread Adapter. The VENTUM Wrench can be secured into a vice to aid in this process.
2. Ensure the HUB adapter intended to be used is on the list of approved mounts above.
3. Ensure all threads are clean before assembly.
4. Follow HUB accessory manufacturer installation instructions.
5. In general, torque the adapter to the HUB compatible Housing to 25 ft-lbf using a torque wrench.
6. If applicable, torque the Flash Hider/Comp/Brake to the barrel to 35 ft-lbf.

# SUPPRESSOR INSTALLATION

**WARNING:** Ensure the firearm is unloaded. Remove the magazine and all ammunition from the workspace. Visually and physically check that the chamber is clear.



1. Verify that the barrel and accessory thread pattern match.
2. Ensure all threads are clean before assembly.
3. Thread the suppressor onto the barrel until it bottoms out, either on the crown or shoulder of the barrel depending on the thread.
4. Torque the Direct Thread Adapter to the barrel using the included VENTUM Wrench to 35 ft-lbf, indexing on the 7/8" wrench flats as shown.
5. Reverse this process to remove the suppressor from the barrel.

## SUPPRESSOR CLEANING AND MAINTENANCE

**WARNING:** Ensure the firearm is unloaded. Remove the magazine and all ammunition from the workspace. Visually and physically check that the chamber is clear.

- Recommended maintenance cycle for the suppressor is 2500 rounds or less.
- For detailed maintenance, disassemble down to the individual components shown in the exploded assembly view.
- The Direct Thread Adapter, Housing, and Cap are heat-treated and black nitride coated stainless steel and can be cleaned with a steel bristle brush, wire wheel, ultrasonic cleaner, media tumbler, tools and CLP to remove fouling.
- The FLOW VENTUM Core is 3D-printed Titanium so it can also be cleaned in the manner described above.
- Another recommended maintenance method is to soak the fully assembled suppressor in CLP or cleaner of your choice and shoot 10-15 rounds to blast out fouling.
- An ultrasonic cleaner, with heat, can speed up this process.
- Ensure all threads are clean before reassembly.

## WARRANTY

There is a limited lifetime warranty against all manufacturing defects and damages caused by the normal use of this product. The manufacturer will repair or replace free of charge any suppressor manufactured by or, at the direction of, HUXWRX Safety CO. LLC.

The product is sold "as is" with no further implied contractual rights or warranties beyond those expressly stated herein.

Visit [www.huxwrx.com](http://www.huxwrx.com) for more warranty information.